

**ANT 309 Wednesday February 24, 2010**  
**XIV. History of Archaeological Thought**  
A. Theories in Social Science



## **B. Paradigm**

**1. Definition: The philosophical and theoretical Framework of a scientific discipline within which theories, laws, and generalizations and experiments performed in support of them are formulated**

## **Paradigms in American Archaeology:**

**Pre 1905: Non paradigmatic: Non-organized research**

**1905-1965 Culture Historical**

**1965-1990s Processual**

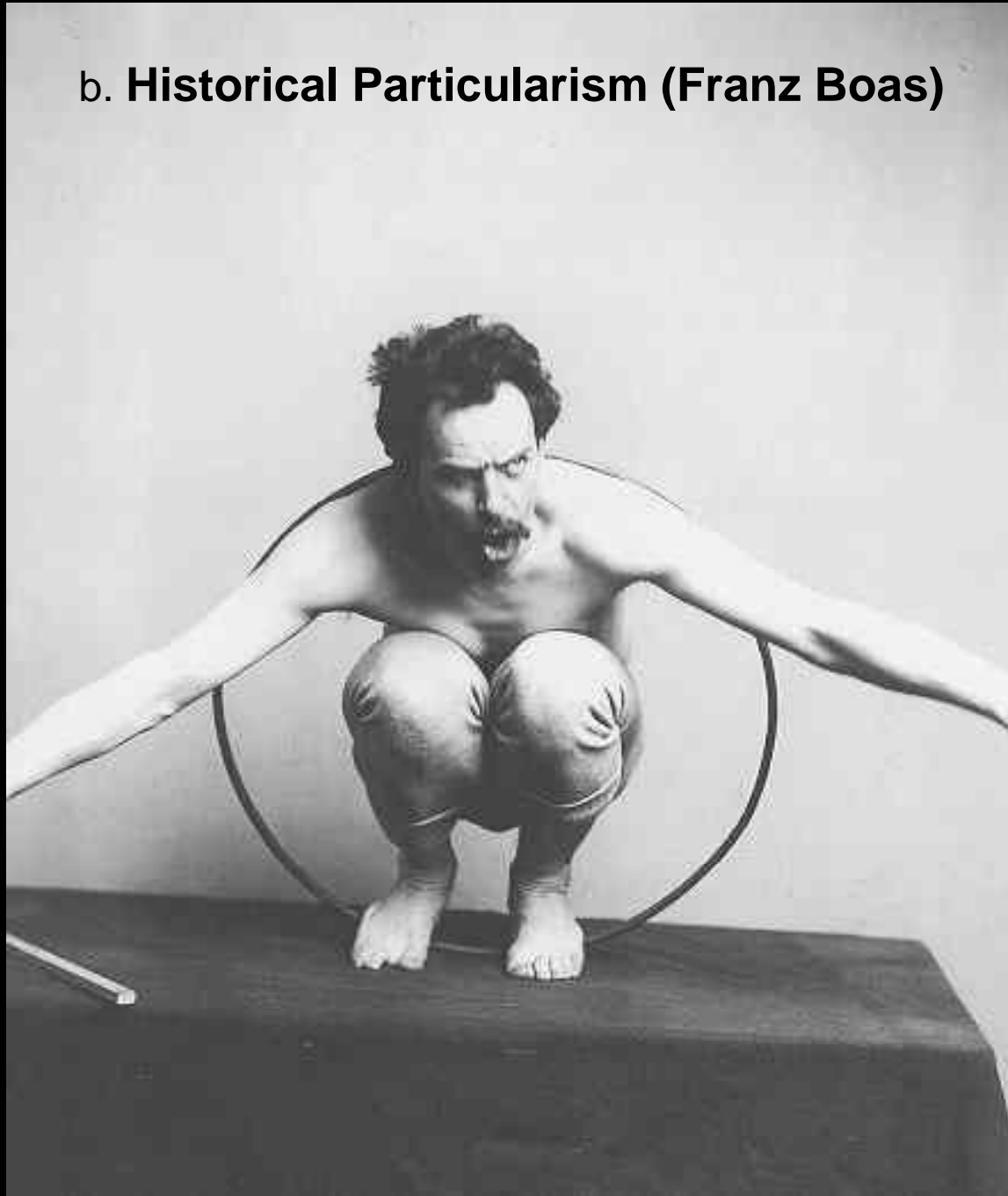
**1990s- Postmodernism?/Neoevolutionary**

**2. Precursors to An Archaeological Paradigm:  
Influences from 19<sup>th</sup> century Anthropology  
a. Unilinear Evolution (Counter to degenerativism)  
based on principle of Psychic Unity**

E. B. Tylor



**b. Historical Particularism (Franz Boas)**



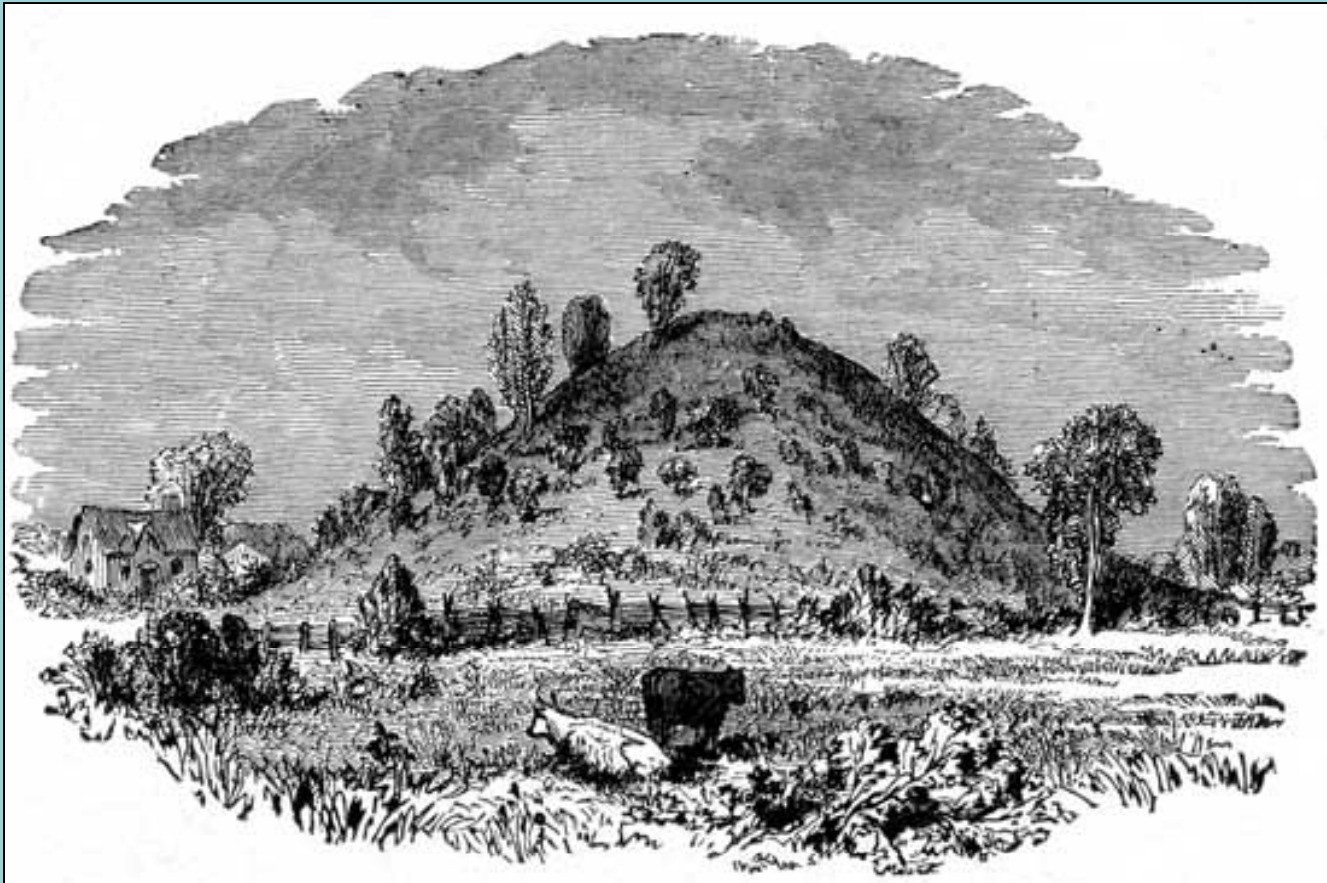
**i. Diffusion: The movement of ideas or technology from one culture to another with or without the movement of people**

**i. Diffusion: The movement of ideas or technology from one culture to another with or without the movement of people**

**ii. Migration: The movement of people bringing Ideas and cultural innovations with them.**

The Moundbuilder Controversy: Early interpretations invoked:

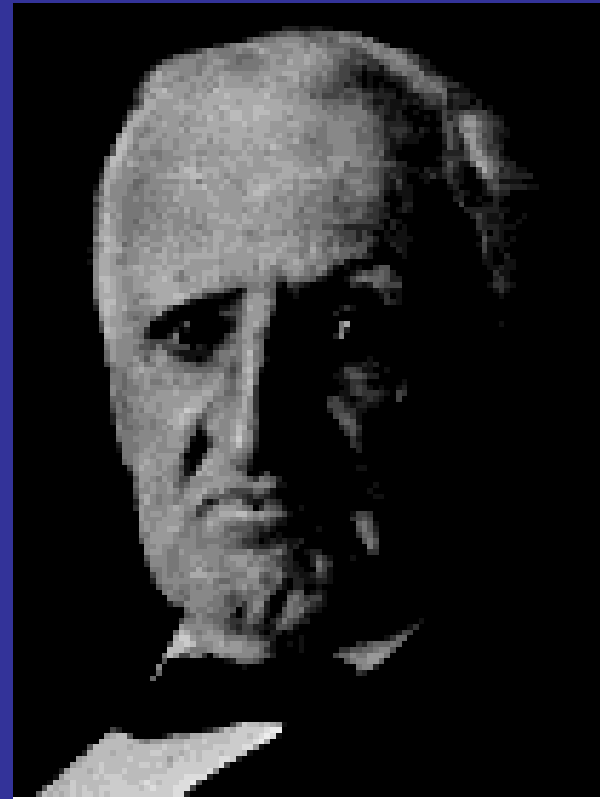
**TRANSOCEANIC DIFFUSION**



# A Bridge to the First Archaeological Paradigm:

**Cyrus Thomas**

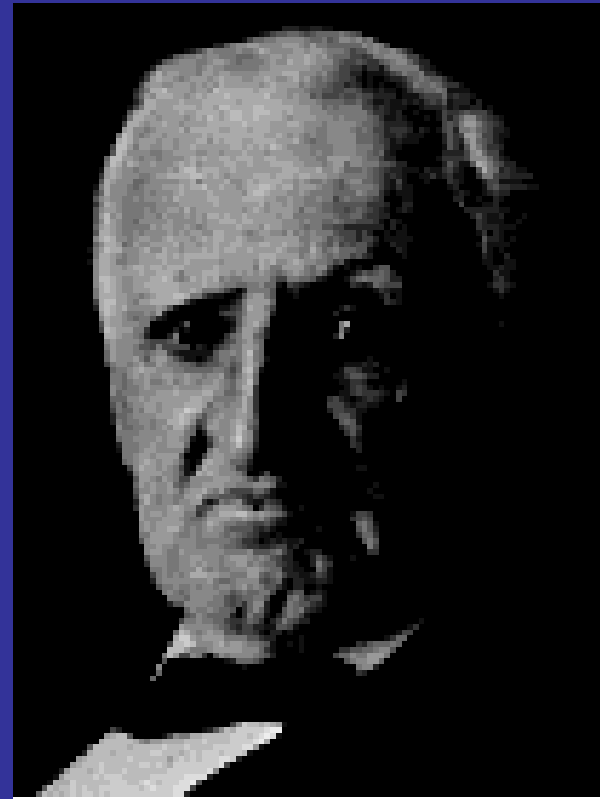
**1894 publication *Report on the Mound Explorations of the Bureau of Ethnology***



## Cyrus Thomas

1894 publication *Report on the Mound Explorations of the Bureau of Ethnology*

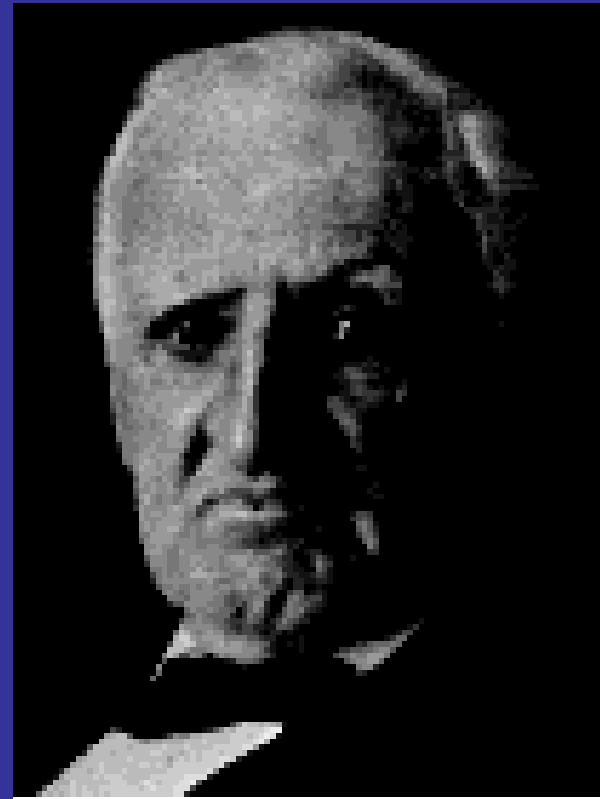
- Solved a major scholarly issue



## Cyrus Thomas

1894 publication *Report on the Mound Explorations of the Bureau of Ethnology*

- Solved a major scholarly issue
- Recognized that the Archaeological record represents multiple time periods/cultures



## **2. The Cultural Historical Paradigm in Archaeology (1905-1965)**

**a. Stratigraphy- and stratigraphic excavation**

**b. Law of Superposition**

## **2. The Cultural Historical Paradigm in Archaeology (1905-1965)**

**a. Stratigraphy- and stratigraphic excavation**

**b. Law of Superposition**

**Max Uhle  
1907  
Emeryville  
Shellmound**

**Stratigraphic  
Excavation**

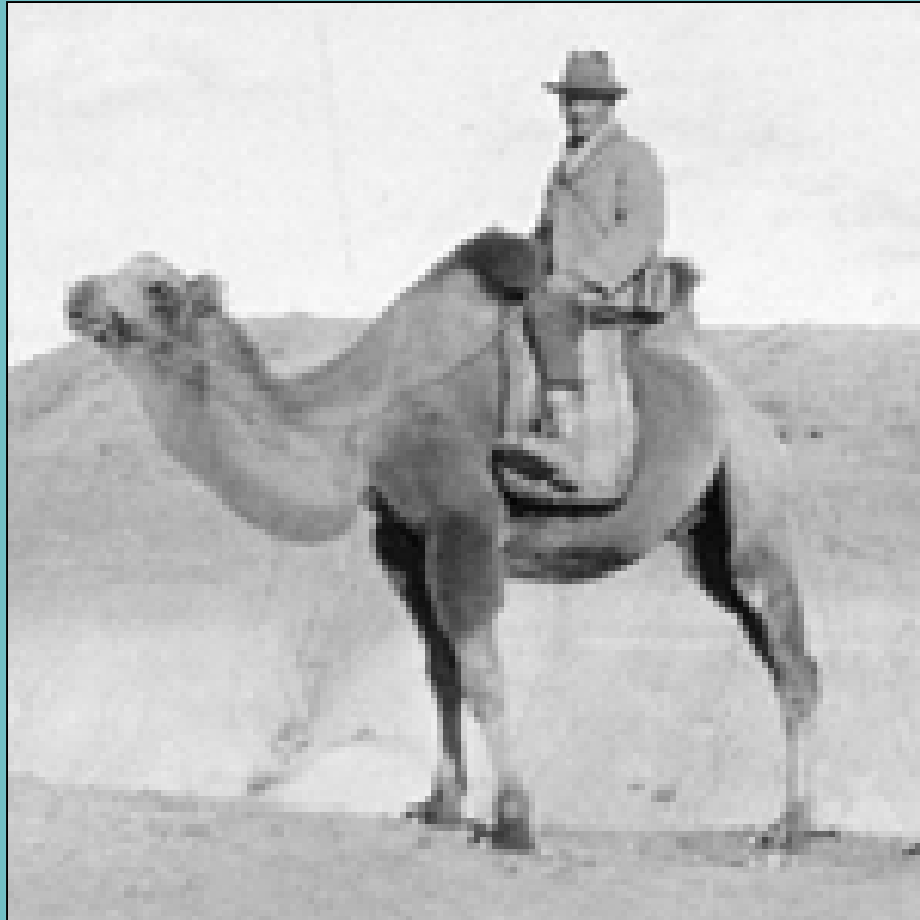


## **2. The Cultural Historical Paradigm in Archaeology (1905-1965)**

**a. Stratigraphy- and stratigraphic excavation**

**b. Law of Superposition**

**c. Typology and seriation**



**Nels Nelson in Mongolia  
Early 20<sup>th</sup> Century**

# Nels Nelson: Stratigraphic Excavation Moving towards Serialization

Strata	Shell	Artifacts								Animal Bones								Whole + Broken Rock		
		Matrix	Bone				Stone				Fish	Bird		Mammal		total	pr cu			
			cu. ft	Strict	Pr	Cu ft	doubt	Strict	p c	doubt		total	p c							
I	38														8	4.7	8	4.70		
II	40	4	10					4	10			25	1.6	40	1	65	.62	10	4.	
III	40			(1)	3	13.3		3	13.3	5	8	74	.54	161	.24	240	.16	45[3]	.9	
IV	120	5	24	[15]	1[4]	120	1	6[5]	20	30	4	266	.53	203	59	499	.24	141[2]	.84	
V	38	1	38		2	19		3	12.7			15	2.5	22	1.7	37	1	68	.56	
VI	48	1	48					1	48	8	6	18	2.75	22	2.2	48	1	15	3.2	
VII	25				1		1	1	25	1	25	6	4	39	.64	46	.54	50	.5	
VIII	25				2	12.5		2	12.5					21	1.2	21	1.2	70	.35	
IX	20	1	20					1	20			20	1	66	.3	86	.23	35	.57	
X	44	3	14.7	(1)	4	11		7	6.3	22	2	12	3.7	142	.31	176	.25	145+(5)	.3	
XI	336	17	19.8	(3)	23	14.6		40	8.4	1[1]	336	40	8.4	761	.44	802	.42	515+(5)	.6	
Totals	774	32	24.2	5[15]	36	21.5	2	68[5]	11.4	67[1]	11.5	476	1.6	1477	0.5	2028	.4	1100	.7	
		Brackets [ ] indicate burial finds																		
		Parentheses ( ) " doubtful																		
// Simplification, additions + other changes proposed.//																				

# d. Archaeological Cultures

The Creation of Regional Culture Histories Or Cultural Chronologies was The Main Goal Of Archaeology 1905-1965

YEARS B.C./A.D.	GEOLOGIC TIME	CULTURE	PERIOD	ASSEMBLAGE
A.D. 1769	LATE HOLOCENE	ESSELEN SALINAN CHUMASH	HISTORIC	
A.D. 1250			MIDDLE-LATE-TRANSITION	
A.D. 1000			MIDDLE	
A.D. 1	MIDDLE HOLOCENE	HUNTING	MIDDLE	
600 B.C.			EARLY	
3500 B.C.			MILLINGSTONE-EARLY ARCHAIC	
8000 B.C.	EARLY HOLOCENE	MILLINGSTONE	MILLINGSTONE-EARLY ARCHAIC	
	TERMINAL PLEISTOCENE		PALEO-INDIAN	

## **Interpretations of Culture Histories Based on**

### **Historical Particularism Emphasized:**

- Normative Concept: Styles tend to conform with societal/cultural norms and to change gradually over time.**

**Victorian  
Architecture  
1850-1900**



## Craftsmen Style (1905-1930)



# **Interpretations of Culture Histories Based on**

## **Historical Particularism Emphasized:**

- Normative Concept**

- Diffusion**

- Migration**