



## Sustainability by Design Retreat

Help position Cal Poly as a leader in preparing students who contribute to a sustainable future.

**YOUR INPUT IS NEEDED NOW!**

- What do our students need to know?
- What learning experiences will prepare them?
- How can we best provide a curriculum to achieve these outcomes?
- How do we model sustainability?

Saturday, Feb 23, 2008, 8:30am – 12:30pm  
Cal Poly Performing Arts Pavilion  
Breakfast included.

**Please see attached invitation  
for additional details**

**RSVP by email to Gladys Gregory  
([ggregory@calpoly.edu](mailto:ggregory@calpoly.edu) or 756.1259)  
by February 18, 2008**



## Invitation to Participate in the Cal Poly Campus Sustainability by Design Retreat

On behalf of Provost Durgin and the Academic Sustainability Committee

### Please join us

**WHAT:** Cal Poly Campus Sustainability by Design Retreat

**WHEN:** Saturday, February 23, 2008 8:30am – 12:30pm

**WHERE:** Cal Poly Performing Arts Center Pavilion

**RSVP:** By email to Gladys Gregory (ggregory@calpoly.edu or 756.1259) by February 18, 2008. We will provide attendees with select reading resources. **We only have space 120 people, please RSVP early.**

Your energy and expertise is needed to help Cal Poly become a leader in preparing students to contribute towards creating a sustainable world. The Intergovernmental Panel for Climate Change head Rajendra Pachauri, a scientist and economist, said "If there's no action before 2012, that's too late. **What we do in the next two to three years will determine our future.** This is the defining moment" (November 16, 2007). Our students will become the leaders who determine our future.

**Your contribution will define Cal Poly's role.**

This interactive, facilitated retreat is an open session for up to 144 people from the Cal Poly community. We will begin with a healthy Continental Breakfast followed by short talks, and interactive exercises. Provost Durgin, faculty, staff, and students will provide brief compelling reasons for engaging in this process and describe the sustainability framework. Interactive exercises will recognize Cal Poly's prior and current successes and help **create a shared vision** of Cal Poly as a leader in preparing students to make significant contributions to the sustainability movement. A smaller group of Cal Poly stakeholders will develop an action plan that will help us achieve this vision.

We look forward to seeing you there.

With warm regards,

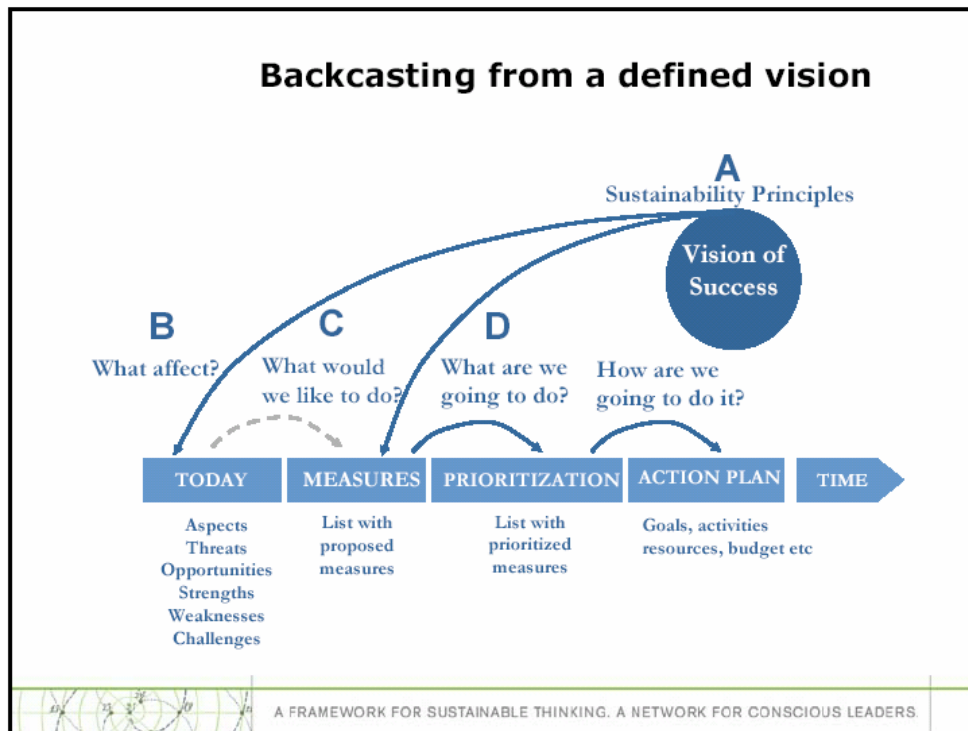
The Academic Senate Sustainability Committee – Workshop subcommittee  
Kate Lancaster (Chair), Harvey Greenwald, Neal MacDougall, Margot McDonald

p.s. In an effort to be sustainable and not generate additional waste, no paper invitation will be sent.

The process will follow the Natural Step framework (see below for illustration and web link), and be facilitated by Ruth Rominger (see below for biography).

<http://www.naturalstep.org/com/nyStart/>

- A. **Awareness - *What do we know about sustainability and why does it matter? What do we know about educating for sustainability?***
- B. **Baseline Mapping - *What do we look like today?***
- C. **Clear and Compelling Vision - *What do we look like as a model of sustainability education and what curriculum, delivery mechanisms, and educational experiences best supports this?***
- D. **Down to action - *How will we manage and prioritize our steps to sustainability?***



Ruth Rominger is the Director of Learning Design at the Monterey Institute for Technology and Education, was Senior Acquisitions Editor and Manager of Editorial Systems at Dryden Press and Vice President and General Manager of Archipelago Productions, an educational multi-media group. Ruth served as Vice President of The Natural Step (2000-2004), a sustainability consulting organization, and continues to advise social benefit organizations working in education and sustainability on developing *networks and learning communities*. She is currently working on a doctorate in *Human and Organizational Systems* at Fielding Graduate University, with a special emphasis on designing collaborative communities. Ruth uses graphic facilitation techniques to generate creativity, shared vision, and actionable solutions. Ruth's current area of practice and research is in the design of networked organizations and online learning communities focused on complex systems change.